

STAGE_

The staging is a 4-hour durational dance performance with **2 dancers** in **4 loops (approx. 55 minutes each)** in a viewable **box (aluminum frame: 400 x 400 x 270 cm L x W x H, with gauze covering)**

The **audience** sits in 1 row of chairs on **all four sides** of the box (max. 8 seats at each side) at a **distance of approx. 150 cm**.

With each **repetition** (loop) the **audience** changes (corresponding to max. $4 \times 32 = 128$ Pax)

At the beginning of each **loop**, **one dancer** is in the **box** and **one dancer** first enters the **room**, then the **box**. At the end, **one dancer** leaves the **box**, then the **room**. **Ideally**, different doors are used for entrance and exit.

In any case, the dancers need a quickly accessible **dressing room** in the immediate vicinity of the performance space.

Accordingly, the **usable area** should be at least **8 x 8 m** (W x D) and the room should ideally have **2 entrances**.

The **box** is independently **freestanding**. The **base** is a custom-fit cut of **judo mats** covered with **gray dance carpet**. (company's equipment)

The assembly of the box is done by the group independently and takes about 30 minutes.

Some scenes use low-frequency **strobe lights**.

We **do not** use pyrotechnics, lasers, open fire or fog, liquids or food.

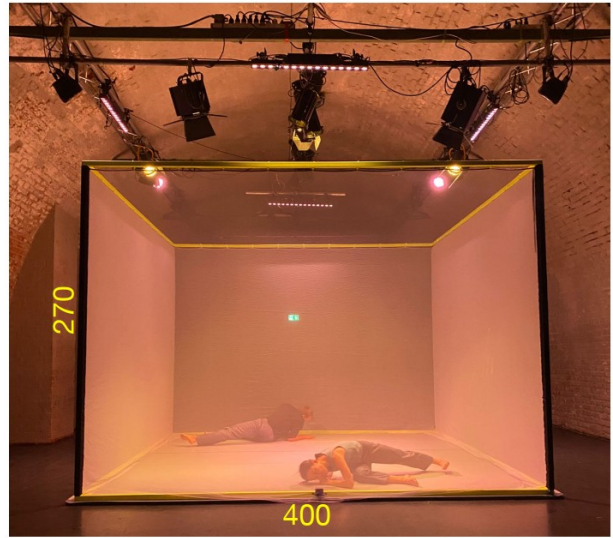
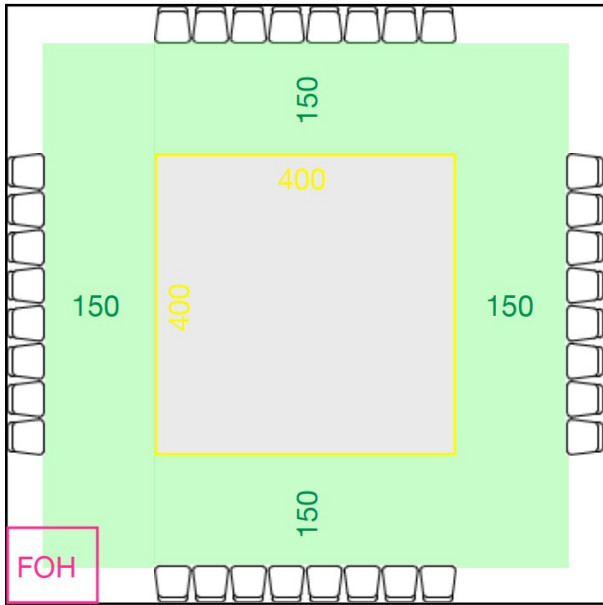
REQUIREMENTS:

1x free space, 8 x 8 m (W x D)
2x access to the space (ideally)
1x wardrobe
32x chairs (for audience)
More chairs for possible additional seating in case of large crowds

COMPANY'S EQUIPMENT:

1x aluminum frame, 400 x 400 x 270 cm L x W x H, B1
1x gauze covering, B1
1x dance carpet incl. tape, B1
1x cut from judo mats, B1

STAGE DESIGN_



SOUND_

The sound consists of a stereo sum and should be as room-filling as possible.

*PA should consist of **4 full-range tops and at least 1 sub**, in order to sound all four rows of the audience evenly.*

*The stereo sum is output from a **MacBook** (company's material) via mini-jack. A **stereo DI box or 2 mono DI boxes** need to be provided.*

*The **mixer** needs accordingly at least **4 outs**. A separate **sub-out** is preferred. A **Dynamic EQ** is preferred.*

REQUIREMENTS:

4x Fullrange Tops
1x Subwoofer
1x Mixer, min. 2 in, 4 out, (preferably with separate sub-out)
1x mini jack to stereo (line or XLR)
1x Stereo DI

COMPANY'S EQUIPMENT:

1x MacBook

The show is operated from mixing desk by the team.

LIGHTS_

The light consists of the following elements:

- (1) Warm white **base light** in the box (4 x 1kW Fresnel) from 4 sides*
- (2) Warm white **top light** (4 x 750W ETC S4 Zoom), tailored to the inner surface*
- (3) Wide area **LED illumination** from the 4 corners (4 x LED Par RGBW(UV))*
- (4) Warm white **top wash** (1 x 1kW sym. Floodlight) centered above the box*
- (5) Wide area **color wash** from the top (4 x LED bar / floodlight RGBW) on all 4 outer sides*

All lamps mentioned must be controllable individually (min 9 dimmer channels, 8 fixtures).

*The show is programmed as a **cue list** (approx. 15 scenes)*

ETC or GrandMA lighting controllers preferred, but not mandatory

*Appropriate hanging points around and above the **box** are required.*

*If **no** rigging is installed at the venue, a corresponding **truss stand (450 x 450 x 350 cm L x W x H with center brace)** is required.*

*If no truss stand or comparable can be provided, various tripods are a conceivable **minimum variant** – and have a corresponding influence on the lighting requirements.*

In general:

The requirements may vary depending on the specific premises and technical inventory and will be discussed and adjusted accordingly before the guest performance.

REQUIREMENTS:

4x 1kW Fresnel, no-color

4x 750W ETC S4 Zoom, no-color

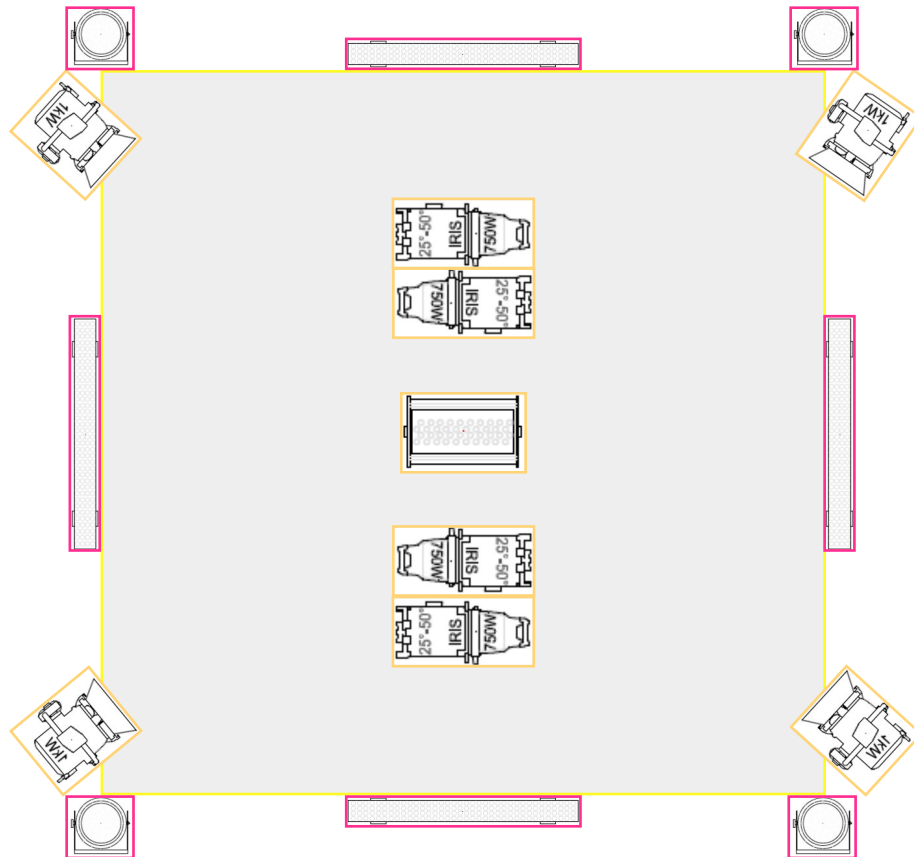
4x LED Par RGBW (preferably +UV)

4x 575W Profiler 25-50°, 2x n-c + #132

Lighting controller (preferably ETC or GrandMA), 15 Cues, 9 dimmer channels, 8 Fixtures

The show is operated from mixing desk by the team.

LIGHT PLOT ABSTRACT_



SET-UP AND DISMANTLING_

*Set-up ideally takes place **two** days before the first performance and lasts between 4 and 6 hours, depending on the stage, hanging stock and personnel.*

*The team also needs **at least one day** on the set up stage for technical rehearsals and dress rehearsal.*

The box is set up independently by the team. The focus is done by the lighting designer.

*The performance duration is approx. 240 minutes
- 4 loops of 55 min each + 5min audience swap.*

Dismantling takes place after the last performance, ideally the next day, and takes about 1 hour.

SCHEDULE (ideal version)

- (1) 2 h set up lights + set up sound if necessary*
- (2) 1 h set up box + soundcheck*
- (3) 1 h focus lights*
- (4) 2 h lights programming*

The final soundcheck takes place on rehearsal day

PERSONNEL

1 sound tech, 3 hours
1 light tech, 4 hours

TOTAL REQUIREMENTS_

STAGE_

1x free space, 8 x 8 m (W x D)
2x access to the space (ideally)
1x wardrobe
32x chairs (for audience)
More chairs for possible additional seating in case of large crowds

SOUND_

4x Fullrange Tops
1x Subwoofer
1x Mixer, min. 2 in, 4 out, (preferably with separate sub-out)
1x mini jack to stereo (line or XLR)
1x Stereo DI

LIGHTS_

4x 1kW Fresnel, no-color
4x 750W ETC S4 Zoom, no-color
4x LED Par RGBW (preferably +UV)
4x 575W Profiler 25-50°, 2x n-c + #132
Lighting controller (preferably ETC or GrandMA), 15 Cues, 9 dimmer channels, 8 Fixtures

TEAM_

TEAM:

Performance // Dance:

Jin Lee, Uwe Brauns

Artistic Director:

Ceren Oran

Dramaturgy:

Jean Baptiste Charlot, Karolína Hejnová

Production Management:

Karolína Hejnová

Supporting Production Management:

Michael Hennig

Costumes and Stage:

Sigrid Wurzinger

Lights and Technical Director:

Dennis Dieter Kopp

The team is involved in the set-up and/or performance in varying capacities and must be accommodated accordingly for the duration of their respective activities.

The corresponding arrangements are made with the production management.

The dancers need a dressing room including coat rack and mirror for the duration of the guest performance.

CONTACT:

technical questions:

Dennis Dieter Kopp

dennisdieterkopp@gmail.com

+49 (0) 172 // 1850034

Production:

Karolína Hejnová

karolina.hejnova@gmail.com

+49 (0) 178 // 3269527