

SPIEL IM SPIEL

Technical Rider
V2

as of: 9.05.2025

Premiere: 29.09.2023
HochX Munich, Germany

Concept & Choreography: Ceren Oran & Moving Borders
Duration: 40 min + 10 min interactive games

CONTENT_

Stage_	2
Lights_	5
Light Plot Generic	6
Sound_	7
Set up_	8
Requirements Total, Hospitality_	9
People_	10

STAGE_

The show is a 40 minutes **dance choreography** for children and adults with **recorded music** in a nearly empty stage (black box) on **grey dance floor**. There 5 minutes interactive game after the show (audience remains seated).

The stage should at least measure **7 x 7 m**. The set consists of 2 metal panels covered with a white rubber band-fabric, 4 wooden chairs and several costumes in a plastic tray. All objects are moved by the performers and placed in different positions on the dancefloor during the performance.

We don't use pyrotechnics, laser, open fire or strobes/strong light effects.

The show needs a venue that provides a seating situation, in which all coming audience (children and grown-ups) can have a good view. The seating rows shouldn't be wider than 10m and there should be a good visibility of the WHOLE dance floor from every seat. We prefer cushions for the first few rows.

The dancers are on the stage when audience comes in. We prefer to gather the audience in the foyer and bring them all at once in as quick as possible.

Venue provides:

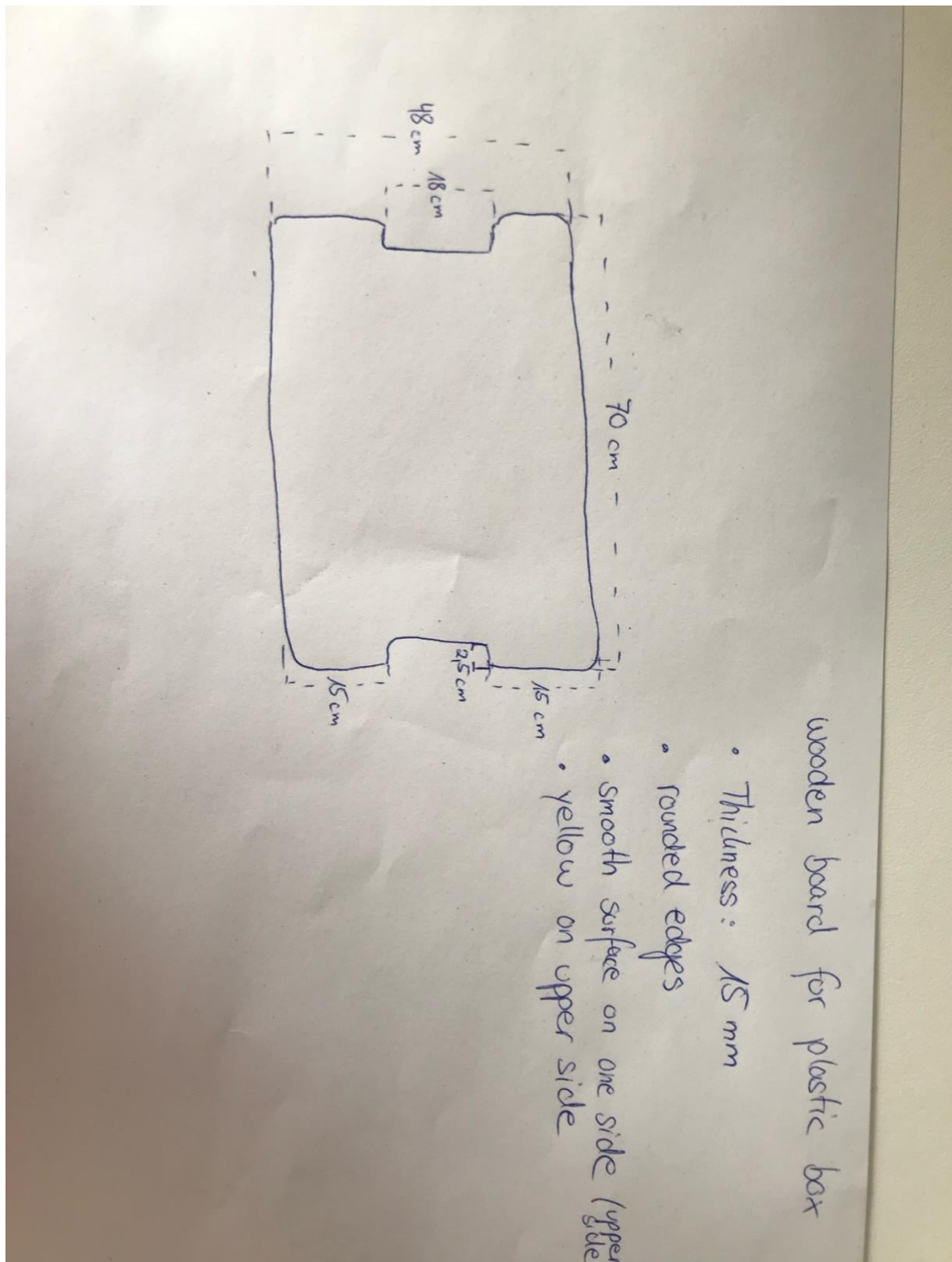
Stage Size	Min. 7x7 m	Black box
Dancefloor	Min. 7x7 m	grey
Dancefloortape		grey or transparent
Marking neon tape		green
Inclining Audience seating (tribune/grandstand)		
All Rigging necessary for hanging lights as in the light plot		

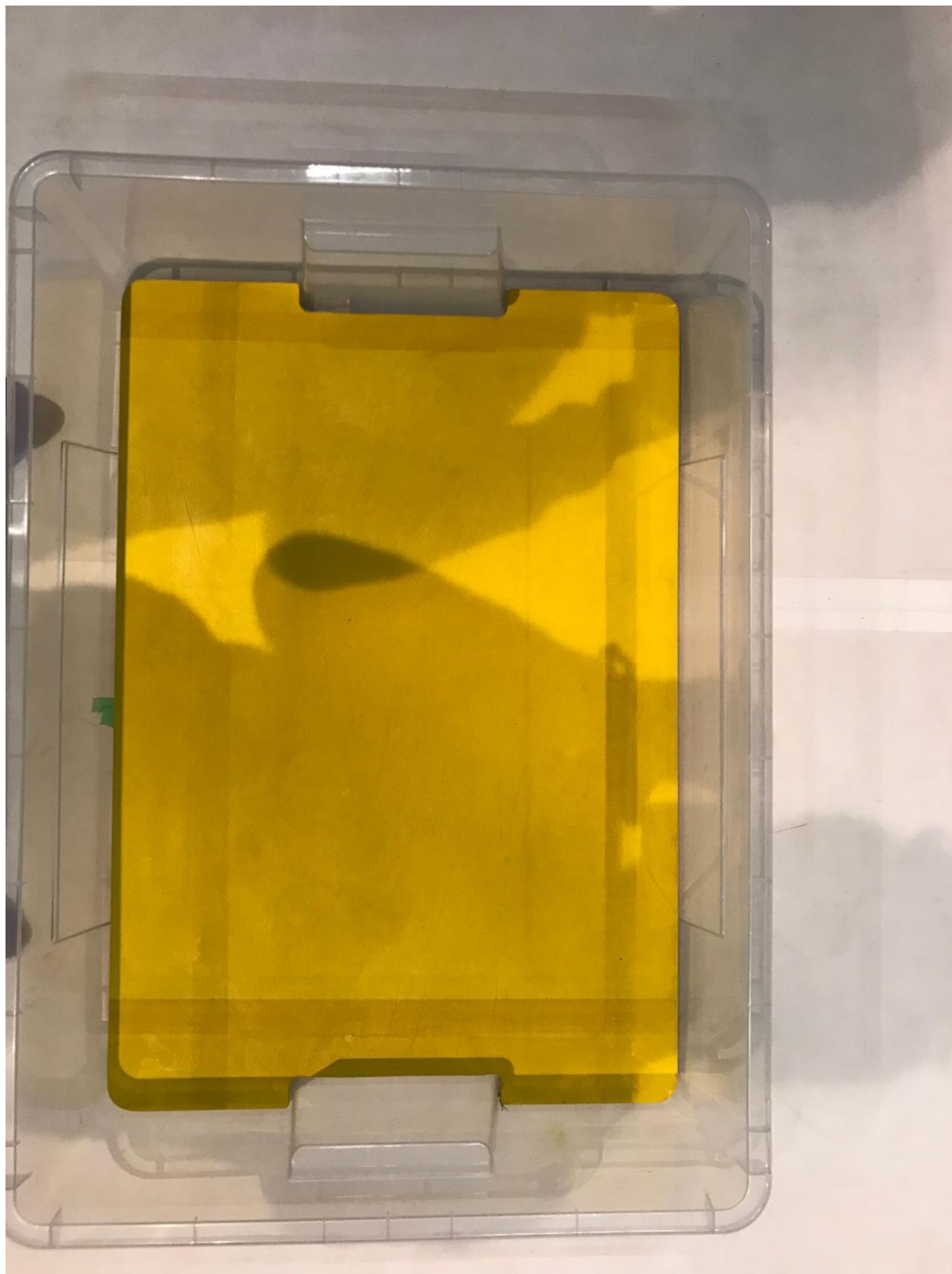
In case company travels by plane, the venue should provide:

3 chairs [IKEA ODDVAR](#)

Plastic box [IKEA SAMLA](#)

Wooden board in yellow, 70x15 cm





Company provides (in case we travel by car)

2 metal panels	covered with white rubber band fabric
----------------	---------------------------------------

3 chairs ODDVAR	wooden
-----------------	--------

plastic box SAMLA	transparent	filled with several costumes
-------------------	-------------	------------------------------

LIGHTS_

The lighting consists of the following parts:

- 1) Front lighting in two rows: 10x LED-Fresnel (e.g. Chauvet Ovation F915 VW LED)
- 2) Two rows of High sides: 4x 1 KW Fresnel
- 3) One Row of Backlight: 3x 1 KW Fresnel
- 4) One Row of Top Lights: 3x 2 KW Fresnel
- 5) LED High Sides: 4x LED-Par with Zoom (e.g. Chauvet Ovation P-56 FC LED)
- 6) Several Specials for Positions of Performers: 2x LED Fresnel, 2x 1 KW Fresnel, 3x PAR 64 CP61, 6x Profiles 750 W 36° (e.g. ETC S4)

VENUE PROVIDES:

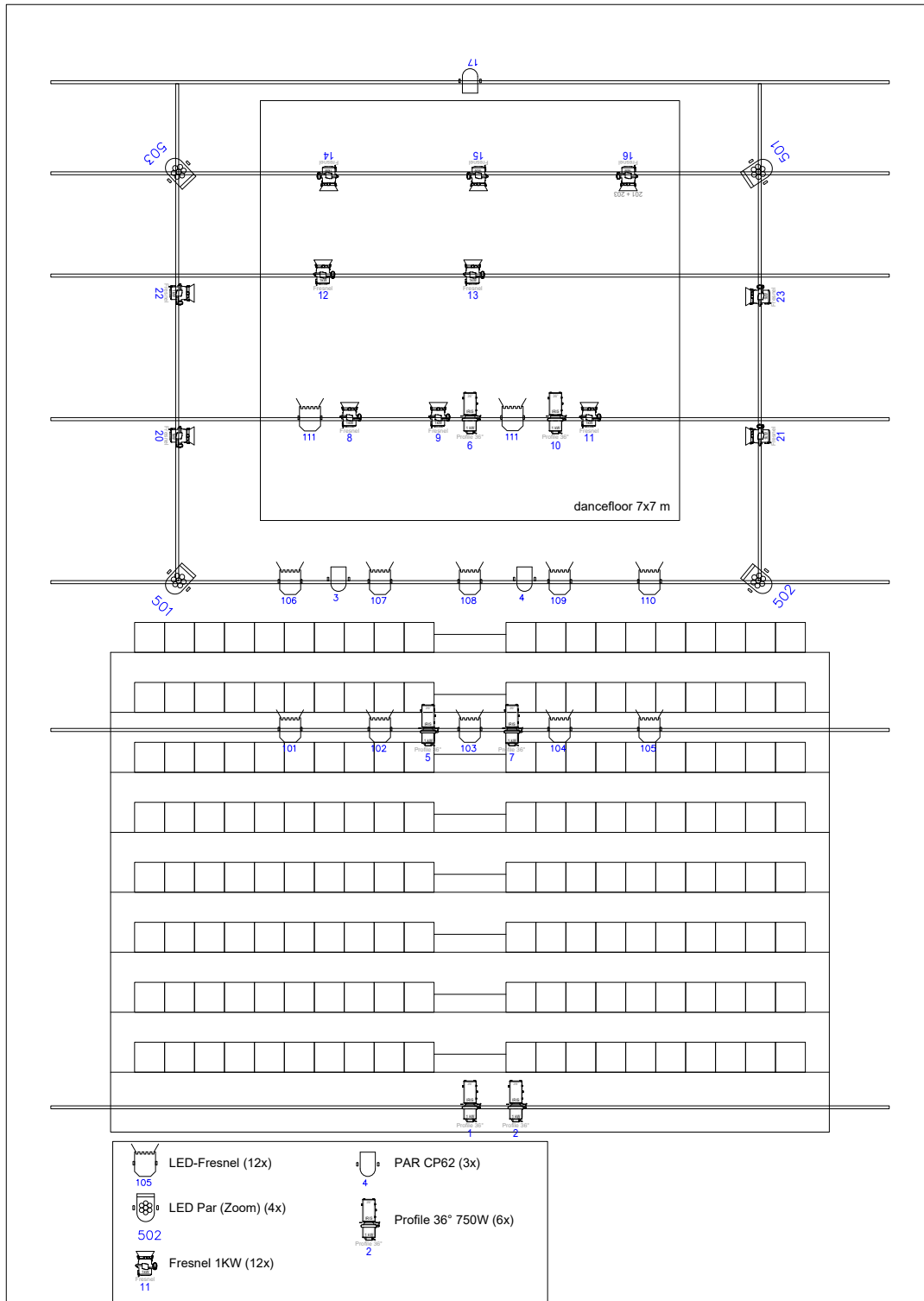
Light Board	Preferably: ETC Ion XE, Gio	We have a show file for ETC EOS, otherwise we need time for programming and a light board operator
12x	LED Fresnel	Chauvet Ovation F915 VW LED
9x	Fresnel 1KW	or PC
3x	Fresnel 2 KW	or PC
4x	LED PAR with zoom	Chauvet Ovation P-56 FC LED
3x	PAR 64	CP 61
6x	Profiles 750 W 36°	ETC Source 4 750W 36° or Zoom 25-50°
All fixtures with barndoors and colour filter frames		
Gels	R119	9x Fresnel 1KW, 3x Fresnel 2KW 5x profiles If necessary also for LED Fresnel/PAR
	L101	1x profile
21x	Dimmers	> 2 KW
All necessary cabling		

COMPANY PROVIDES:

ETC EOS show file

All requirements can change in accordance with the room, technical equipment et al., and will be discussed and readjusted beforehand.

The team will run the show.



SOUND_

The show runs with **recorded music (4 sound files)**

VENUE PROVIDES:

PA-System	professional	Capable of playing high-quality sound for audience and performers (monitoring for performers if necessary)
Input	Mini-Jack	
Laptop	With QLab or other Media Player	can probably be provided by our company if discussed beforehand

COMPANY PROVIDES:

4 Soundfiles or QLab File	Data Format: .wav
--	-------------------

SET UP_

The set up takes around 6-7 hours, depending on the room, equipment and personnel.

After the set up the team requires 2-3 h rehearsal time.

The duration of the show is approx. 40 minutes + 5 minutes interactive games

Clearing the stage can start directly after the last show and takes around 30 min.

SCHEDULE

2 h hanging lights

30 min set up of Panels (can be in a room next to the stage)

30 min spacing

2 h focusing lights

2 h programming lights

30 min soundcheck (if PA is ready and set up)

2-3 h rehearsal

e.g.:

9 – 15 h Set up

15 – 18 h Rehearsal

The dancefloor should be ready and taped when we arrive. Otherwise the time for laying the dancefloor has to be added to the set up time. The dance floor should be cleaned before the dancers come in the space and after every show day.

Set up time can be reduced if lights are pre-rigged. We can provide an adapted light plot for you.

On the day of the show, the company needs to be in the theatre two hours before the actual beginning of the show.

PERSONNEL PROVIDED BY VENUE

2 light technicians, 6 hours

1 sound technician, 1 hour

Stage technicians for dancefloor

TOTAL REQUIREMENTS_

Stage	Lights	Sound
Min. dimension: 7x7 m	12x LED Fresnel Chauvet Ovation F915	professional PA-System
Grey dancefloor 7x7 m	4x LED PAR Chauvet Ovation P-56 FC	Mini-jack input
Black box	9x Fresnel 1 KW	Laptop with QLab or Media Player (.wav)
All rigging for lights	3x Fresnel 2 KW	
	3x PAR 64 CP61	
	6x Profiles 750W 36°	
	21x Dimmers	
	Light board: ETC Ion XE, Gio	
	Gels: R119, L101	
	All cabling	
	All fixtures with barndoors and colour frames	

HOSPITALITY_

If more than 2 shows are booked, we need the possibility of washing, ideally provided by the venue.

If possible, we appreciate support with ironing.

Usually, there is no manager touring with the company. Make sure, please, that there is a contact person from the venue or festival present when the company arrives in the theatre and can show the team their way around.

We appreciate packed water and small snacks available for the team in the backstage.

PEOPLE_

TRAVELLING TEAM

On Stage:
3 Performers

Behind the Stage:
1 Technician
(1 Choreographer/Tour Manager)

CONTACT

Tech:
Ramona Lehnert
lehnert.mona@gmail.com
+49 (0) 157 39334937

Production:
Karolína Hejnová
karolina.hejnova@gmail.com
+49 (0) 178 32 69 527